

Displatrix™

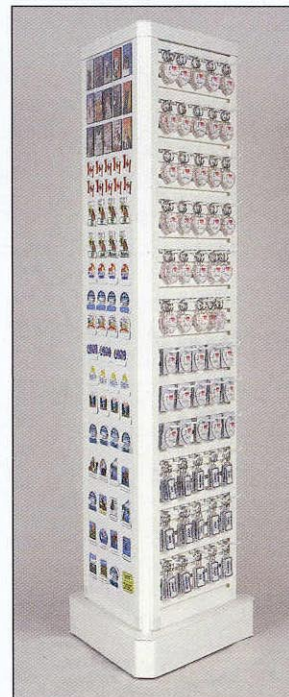
➤ Innovative Polymer Display Solutions



Cube 9002 - 18.5" X 18.5" X 60"

Features:

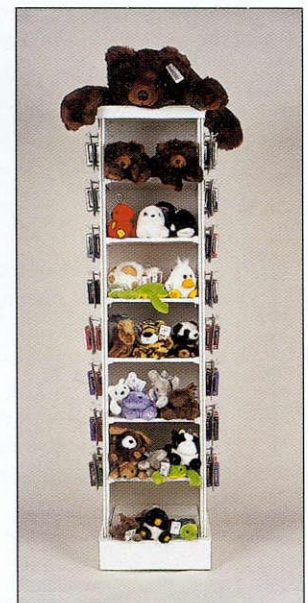
Rugged plastic slatwall design
simple and quick assembly, no tools required
low cost shipping: UPS, FEDEX accepted
lightweight polymer construction
attractive designs; 5 contemporary colors
versatile components; interchangeable parts



Triangle 9001 W/9925
18.5" X 18.5" X 60"



Pinwheel 9003
16" X 16" X 60"

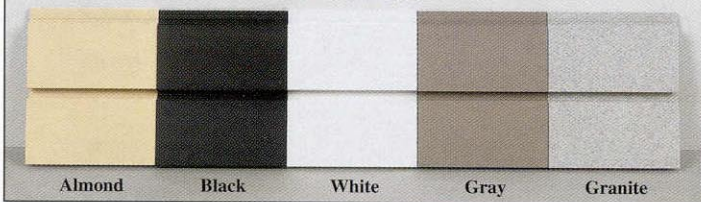


Shelf Unit 9006
12" X 12" X 60"

Displatrix™ is . . .

- A modular approach to display merchandising with unlimited design possibilities.
- Designed for quick & easy assembly & disassembly, no tools or hardware are required.
- A Simple frame & post system, panels connect by sliding posts into panels vertical track.
- An excellent system to construct point of purchase displays, table top merchandisers & graphic panels.
- Designed for all components to be interchangeable with various color options.

Colors

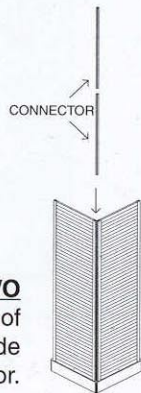


Displatrix and plastic slatwall panels are available in five contemporary colors. **NOTE:** Samples may not represent actual colors

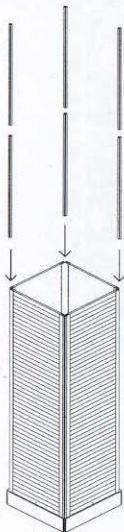
Assembly



STEP ONE Lay swivel base on level floor; place 2 slatwall panels side by side to create a 90 degree angle onto swivel base

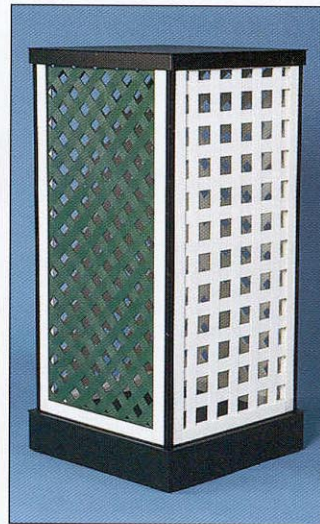


STEP TWO Slide one connector into edges of both slatwall panels and then slide another connector.

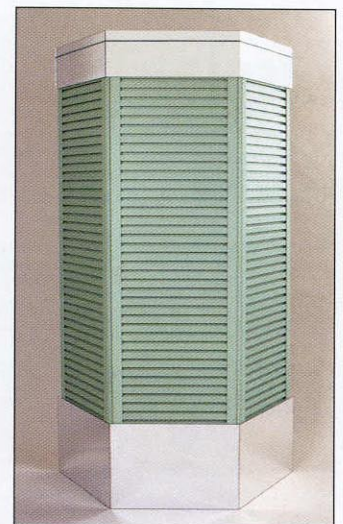


STEP THREE Place remaining slatwall panels onto base and slide connectors into edges of slatwall panels

STEP FOUR Place plastic lid onto top of displays, push in plastic pins through holes in bottom of slatwall panels to complete the assembly



Cube Unit
w/ Plastic Lattice



End Isle Display
w/ Plastic Slatwall



Pedestal
w/ Plastic Lattice



Cube Unit
w/ Plastic Slatwall

Panel Inserts:

Displatrix™ displays & panels are available with a wide variety of inserts, for example:

- Plastic slatwall - 1 1/4" & 3" on center grooves
- Solid graphic insert
- Fabric clad panel
- Metal panel
- Cork board
- Plastic lattice